

Summer 2020 Pilot Award – Request for Applications

Grants awarded through this RFA are intended to provide early support for exploratory ideas, particularly those with novel hypotheses for autism. Appropriate projects for this mechanism include those considered higher risk with less assurance of ultimate impact, but with the potential for transformative results.

Investigators new to the field of autism are encouraged to apply for these awards. The total budget of a Pilot Award is \$300,000 or less, including 20 percent indirect costs, over a period of up to two (2) years.

[Policies and
Procedures](#)

Application Deadline
April 24, 2020



[RFA](#) [How To Apply](#) [FAQ](#) [Past Awards](#)

SFARI Mission

The mission of the Simons Foundation Autism Research Initiative (SFARI) is to improve the understanding, diagnosis and treatment of autism spectrum disorders (ASD) by funding innovative research of the highest quality and relevance.

To this end, we solicit applications for SFARI awards from individuals who will conduct bold, imaginative, rigorous and relevant research.

Objective of the Pilot Award

The goal of the Pilot Award is to provide early support for exploratory ideas, particularly those with novel hypotheses. Appropriate projects for this mechanism include those considered higher risk but with the potential for transformative results. To get a better understanding of SFARI's different RFAs and whether the Pilot Award may be the best mechanism to support your project, please read our blog post ["SFARI RFA reboot Why, what and how"](#).

In particular, we encourage applications that propose research to link genetic or other ASD risk factors to molecular, cellular, circuit or behavioral mechanisms of ASD. Please read more about SFARI's scientific perspectives [here](#). We also strongly advise applicants to familiarize themselves with the [current projects](#) and other [resources](#) that SFARI supports and to think about how their proposals might complement existing efforts.

The total budget of a Pilot Award is \$300,000 or less, including 20% indirect costs, over a period of up to two (2) years. We encourage investigators to take advantage of the flexibility in budget and duration, tailoring the scope of the award as appropriate for their specific aims. For projects that propose two years of research, progress will be critically evaluated at the end of year one before support for the remaining year will be approved. When provided with a compelling justification, we are willing to consider larger budgets for the Pilot Award. One example would be exceptional costs required for some human studies. We strongly encourage investigators considering budgets that exceed our guidelines to consult SFARI before submission (please contact sfarigrants@simonsfoundation.org).

Eligibility

All applicants and key collaborators must hold a Ph.D., M.D. or equivalent degree and have a faculty position or the equivalent at a college, university, medical school or other research facility. In addition, eligible applicants must have independent lab space at their institution.

Applications may be submitted by domestic and foreign nonprofit organizations; public and private institutions such as colleges, universities, hospitals, laboratories, and units of state and local government; and eligible agencies of the federal government. There are no citizenship or country requirements.

Multiple Applications, Resubmissions, and Renewals

Unsuccessful applications submitted to previous SFARI RFAs may be resubmitted in subsequent RFAs. For all resubmissions, we ask PIs to submit a statement of changes describing substantive changes to the application since the previous submission. If the previous application was externally reviewed, this document should include point-by-point responses to the reviewers' critiques. If the revised application does not include substantive changes, it is unlikely that the outcome will change. This is especially true for applications that were not externally reviewed, as this decision is often based on the relevance of the project to SFARI's mission.

For investigators with active SFARI grants, renewal requests will be considered but we also encourage investigators to seek continuation support from outside—usually federal—funding sources. Decisions on new proposals from current SFARI Investigators will include evaluation of progress on previous or ongoing SFARI grants.

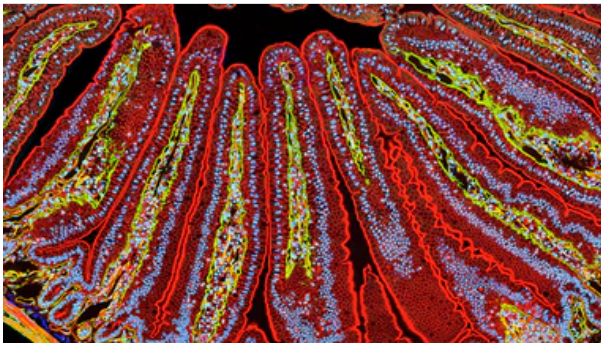
Instructions for Submission

Applications must be completed electronically and submitted using forms provided at [proposalCENTRAL](#). Please log in as an applicant, go to the "Grant Opportunities" tab, scroll to Simons Foundation and click "Apply Now" for the Simons Foundation Autism Research Initiative – Pilot Award program. For assistance, please call 800-875-2562 or email pcsupport@altum.com.

Details concerning application requirements and submission can be found in our [instructions](#) or on [proposalCENTRAL](#). In case of remaining questions, please take a look at our extensive [FAQ](#) section.

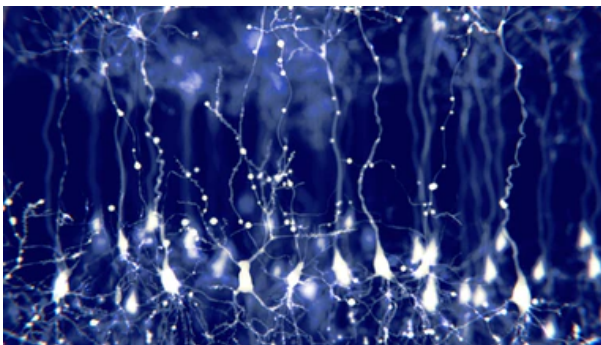
Read Less

Related Content



[News](#)

SFARI Summer 2019 Pilot awardees announced



[News](#)

SFARI Winter 2019 Pilot awardees announced



[Blog](#)

SFARI RFA reboot: Why, what and how



[Funding](#)

